

HARTISMERE SCHOOL

AN OUTSTANDING CO-EDUCATIONAL DAY SCHOOL
AND MUSIC ACADEMY FOR STUDENTS AGED 11-19



Prospectus



What are the school's aims, visions and values?

Ofsted say...

“Hartismere is a very caring school, and places the outstanding guidance and support it gives to its students at the centre of its work.”

Education has a long history in Eye and the surrounding villages. The grammar school was founded in 1451 and there are indications of the presence of a school even before then.

Hartismere carries on this tradition of very high levels of academic success and the school is traditional in the approach it takes to young people. Our motto, *discamus ut serviamus* suggests our core values and ethos: the children both 'learn and serve'. They receive a superb academic education which is rounded by opportunities to give to and to become ever more a part of our community.



Welcome

Ofsted say...

“Hartismere is an outstanding school.”

It is a special privilege to serve as Headmaster at Hartismere. Each and every day I see a level of commitment from staff that I have never encountered in another school during the course of my career.

Our parents are amongst the most supportive I have had the privilege to know and our scholars are both a pleasure to teach and a credit to their families. They deserve the high standards they achieve in examinations and they make the atmosphere caring and warm.

I look forward to working with you as a new student or parent of the school.

Welcome to Hartismere.

Jim McAtear
Headmaster



How do we communicate with the school?

We want your child to enjoy school and to be successful: to this end we work in partnership with parents to create strong links between home and school.

The initial point of contact is the form tutor and sometimes the head of year too. You can find out who they are from the pupil planner, which is issued to all pupils on arrival at Hartismere.

The form tutor or head of year can be contacted by telephoning the school. If they are not available (they are often teaching during the school day), they will return your call or, if necessary, arrange for you to pop in and meet with them for a chat.

If your concerns are of a more serious nature, or if the tutor or head of year have been unable to resolve them, then a meeting can be arranged with a senior member of staff. Mr Luxton and Ms Gray are the deputy headteachers and Mr Waller is an assistant headteacher.

We encourage parents to give us an email contact so that non urgent communication can be sent out via Hartismail. You may also email the school if you are unable to make contact by telephone: your message will be forwarded to the relevant member of staff. Many members of our administration team have been with us for a long period of time: they are very happy to answer any queries you may have about general school procedures such as school trips, pupil absences or after school clubs for example. We look forward to welcoming you to the school.

Jean Marshall
PA to the Headmaster

How does the school manage the transition from primary school?



The transition programme for the pupils in year 6 starts with our year 5 open afternoons in the summer term, when pupils come for taster lessons and a tour of the school. They have to learn about things very quickly because in the afternoon the students take their parents on a tour of the school! In year 6 the children come to Hartismere in small groups for activities such as photography, science, art and modern languages. There are also sessions for more able students and talented pupils from across the pyramid of schools.

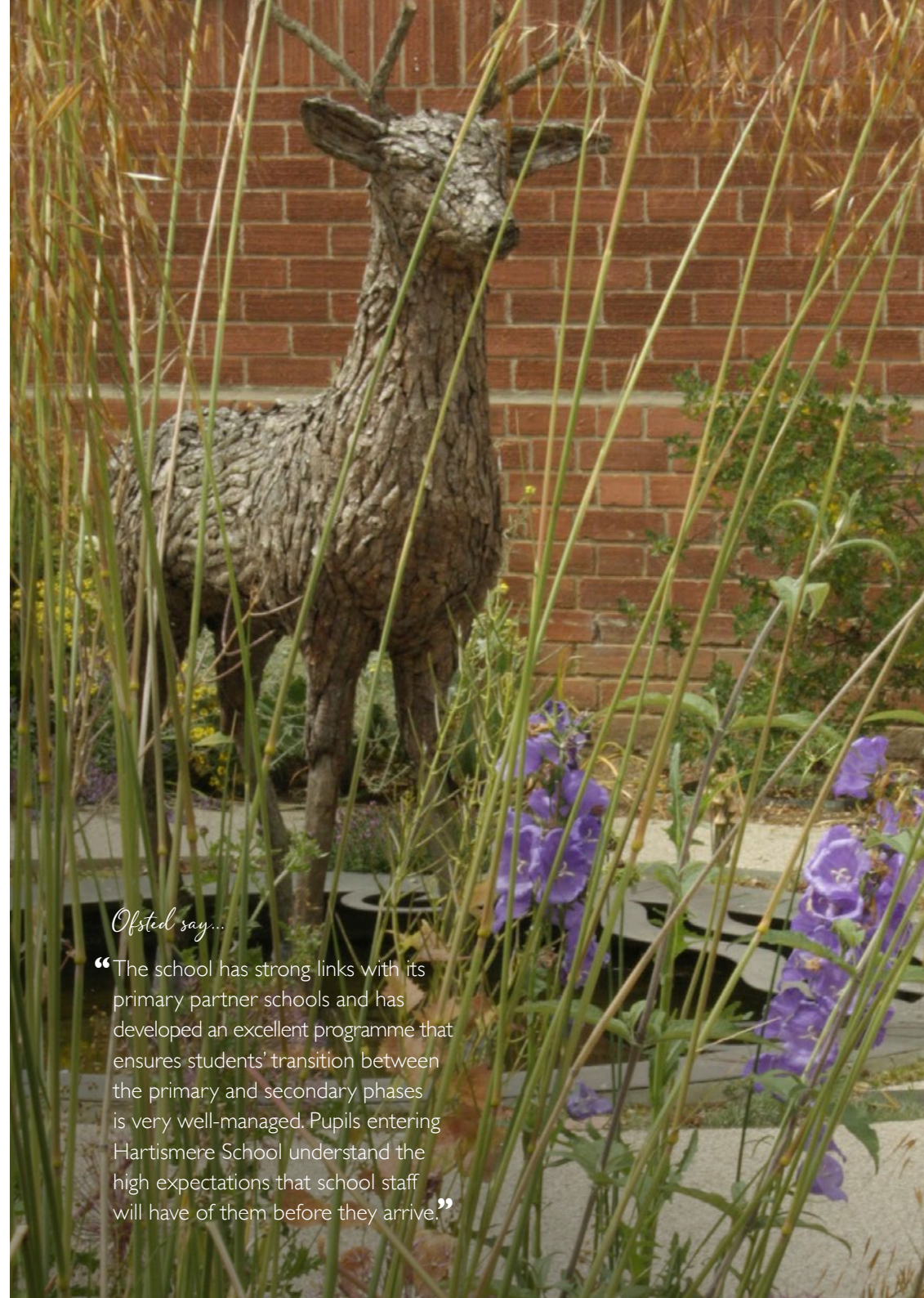
Pupils new to Hartismere say...

“The science lessons are really cool. You won’t be left on your own or get lost because the Here2Help people are always about on your first day.”

“I think the best thing is doing all the new subjects and all the facilities. Food technology and Spanish are good fun. You make lots of friends really quickly.”

“I really look forward to coming to school now. The teachers are really nice and I have lots of new friends already.”

A group of year 9 and 10 students receive training in peer mentoring. They work with students during their transition from year 6 and in activities in the early weeks of year 7. These students form the Hartismere ‘Here2Help’ group.



Ofsted say...

“The school has strong links with its primary partner schools and has developed an excellent programme that ensures students’ transition between the primary and secondary phases is very well-managed. Pupils entering Hartismere School understand the high expectations that school staff will have of them before they arrive.”



What is the school environment like?

In recent years the school has benefited from significant improvements to its environment.

A new dance studio (one of the largest in East Anglia) has been added and the school has its own fitness suite. The school library has been completely refurbished and a dedicated reading room created for the sixth form students.

Almost every classroom has been modernised, along with an internet café in the College. A six-pitch sized field has been added for rugby, cricket and hockey. New science laboratories and ICT rooms have added another dimension to the technological facilities at school and a new food technology room gives a wonderful space for the students to learn about food and nutrition.





What about extra-curricular activities?

Trips are available to local places of interest as well as to international destinations such as Iceland and Thornham Walks; Berlin and Norwich Castle; Austria and Arran; Rome, Kenya, Cambodia and the Globe Theatre.

Pupils can take part in the Duke of Edinburgh's Award: many successfully complete the Bronze Award and progress to and complete the Silver Award. We are proud that our young people actively help others and give many hours volunteering in the local community.

There are over 80 clubs, activities and trips available at Hartismere. These range from rugby to archery, from radio club to choir and from chess to go-karting and sailing. The sports extra-curricular clubs and activities are changed every term to reflect the sporting calendar.

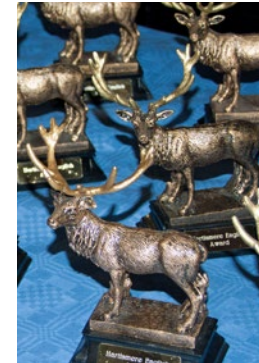
Ofsted say...

“students are proud of their school...the school offers them a broad range of subjects and extra-curricular activities to choose from”





How does the school support more able pupils?



Our pupils consistently demonstrate their outstanding potential through participation in a variety of programmes designed to really challenge them. An enhanced curriculum provides them with the additional depth and breadth necessary to help them realise their potential.

Our unique Enrichment and Talents programmes offer a range of opportunities to enhance students' classroom learning, develop existing interests and stimulate interest in other areas. Our Enrichment programme sees children debating the controversies surrounding the rightful homes of ancient artefacts, getting to grips with choreography, applying mathematical skills in new and exciting ways and participating in the Young Enterprise programme. Our Talents programme offers additional pathways in the arts including the opportunity to take a London Academy of Music and Dramatic Art (LAMDA) exam, learn a new language such as Russian, focus on particular musical talents, undertake an Arts Award or become a Sports Leader working with others (including those from local Primary schools).

Throughout their time at Hartismere, more able pupils access a wide variety of extra extension and enrichment opportunities. These complement or go beyond classroom activities – for example, students take part in the Suffolk Maths Challenge, Going Global Through Language and the Arts Award.

Other pupils have been supported with More Able Pupil Support (MAPS) programmes either within the school or working in partnership with external providers.

This support means that the more able pupils who study at Hartismere develop their full range of abilities and potential: they achieve exceptional academic results in public examinations as well as excellent sporting, dramatic and musical achievements.

Ofsted say...

“the progress of the most able students is outstanding”. The school “supports these pupils so that they realise their full potential.”



Ofsted say...

“the contributions that students make to their community are exceptional. They are proud of their school.”

How do the children become involved in the community?

One of the main aims of the school is to help our young people to become givers to the community. The 'Hartismere Hundred' began as an attempt by the students, staff and friends of the School to support one hundred different charities, a goal the school achieved in 2015. We did not stop there, however and the number of charities the school supports continues to grow!

Students often lead in activities to support local, national and international groups. These range from assembly activities which raise awareness of others in the Community to fetes for 'Guide Dogs for the Blind' (entirely organised by students) to work with 'Aquabox' raising funds for the provision of fresh water around the world.

In addition to helping our children to develop as compassionate and thoughtful human beings these activities are great fun and develop a spirit of camaraderie and friendship.





What sporting opportunities are available?

The school is represented by teams in hockey, rugby, cricket, netball, football and many other sports. The school is proud to have on its staff two national Division I rugby players and staff who have played sport at premier level and coached at national level. The school works hard to link students to local clubs. Alumni include Daniel Hipkiss who represented England in the Rugby World Cup final in Paris in 2008. What an inspiration to our current generation of young sports men and women.



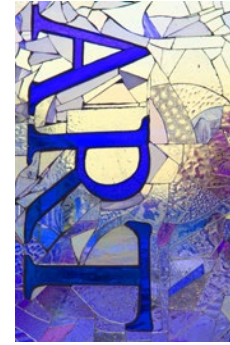
What about the core subjects?

Academic achievement in the core subjects is traditionally outstanding at Hartismere. Even the most challenging targets are met and exceeded year on year and students make exceptional progress.

In year 7 pupils are arranged into sets using a traditional approach which allows students to be stretched and to reach their own individual potential. The core subjects of English, mathematics and science are studied by all pupils in years 7 through to 11. All three subjects have their own suite of rooms tailored to their particular needs: in each of the maths rooms there is an interactive screen; every science room is fitted out as a laboratory and the English rooms surround an open study area. Science and maths have a dedicated ICT suite.

Ofsted say...

“the quality of teaching is outstanding in a wide range of subjects and across all years”



Will my child's artistic abilities be encouraged?

Art is everywhere at Hartismere: it can be seen in the sculpture garden which was designed and created by the students; in the photography galleries in the dining hall and College, in the installations in the art garden and in the examples of fine art around the school.

Each teacher of art and photography at Hartismere is an artist in their own right. The glass mosaic window by artist Teri Lockton may be seen from the garden at the entrance to the school.

Pupils find inspiration for their work in fine art, illustration, photography, sculpture, and clay through visits to national and local exhibitions, installations and degree shows. Many students have found success in the visual arts, including at the prestigious Slade School of Fine Art and Central St Martins.

A gallery of recent artwork is available on the school's website and can be viewed throughout the school.



Ofsted say...

“teachers routinely have high expectations of their students and this leads to exceptional levels of progress”

Will my child's musical potential be encouraged?

Pupils' musical potential and talent is nurtured. Each year some pupils are admitted to the school on the basis of their musical aptitude; in the sixth form, students with particular abilities benefit from a music scholarship. All receive an additional music lesson in years 7 and 8, and there is a specialised music group for those with exceptional talent. Students perform in a range of public events, including the school's annual music evenings and in productions.

Every child at Hartismere is warmly invited to join the choir. The climax of the Michaelmas term comes when the school gives its annual performance at St Peter and St Paul Church in Eye. Throughout the year there are many specially arranged music evenings where pupils perform and demonstrate their musical talents in groups and as individuals. These range from instrumental recitals to rock music, from swing band to strings. The school has a long history of successful productions, including 'Beauty and the Beast', 'Oliver!', 'West Side Story' and 'We Will Rock You'. Many students take up opportunities for musical tuition.





How can parents become more involved with the school?

Parents of pupils at the school suggest...

"...coming along to the very friendly and welcoming PTA meetings. Your involvement can range from contributing your ideas and opinions, to organising and assisting at fundraising events. It is a great way to get to know Hartismere School and the wonderful community within it."

"...becoming a Parent Governor or joining the PTA. Both are extremely rewarding and interesting and give an opportunity to be involved with some of the school's decision making and fund raising."

"The simplest, and in some respects most important and effective way, is to ask students about their day and look at school books together. This shows the children that you care about their education and want to help maintain the standards that are so good at this school."



Ofsted say...

"parents are overwhelmingly supportive"



How does the school perform academically?

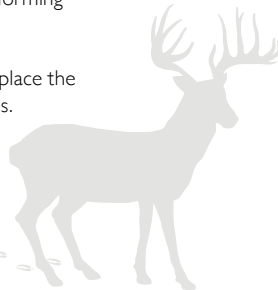
Ofsted say...

“students very much enjoy their learning”

Hartismere has a record of outstanding academic performance at all levels.

GCSE results have seen students consistently outperform the most challenging targets set independently for the school. The value added score is regularly the highest in the county; the school's record is particularly excellent where English and Maths are concerned, with the school amongst the top performing schools in East Anglia.

At A level, results have continued to place the sixth form at the top of County tables. Hartismere's sixth form college has experienced enormous growth.



How does the school prepare my child for the future?

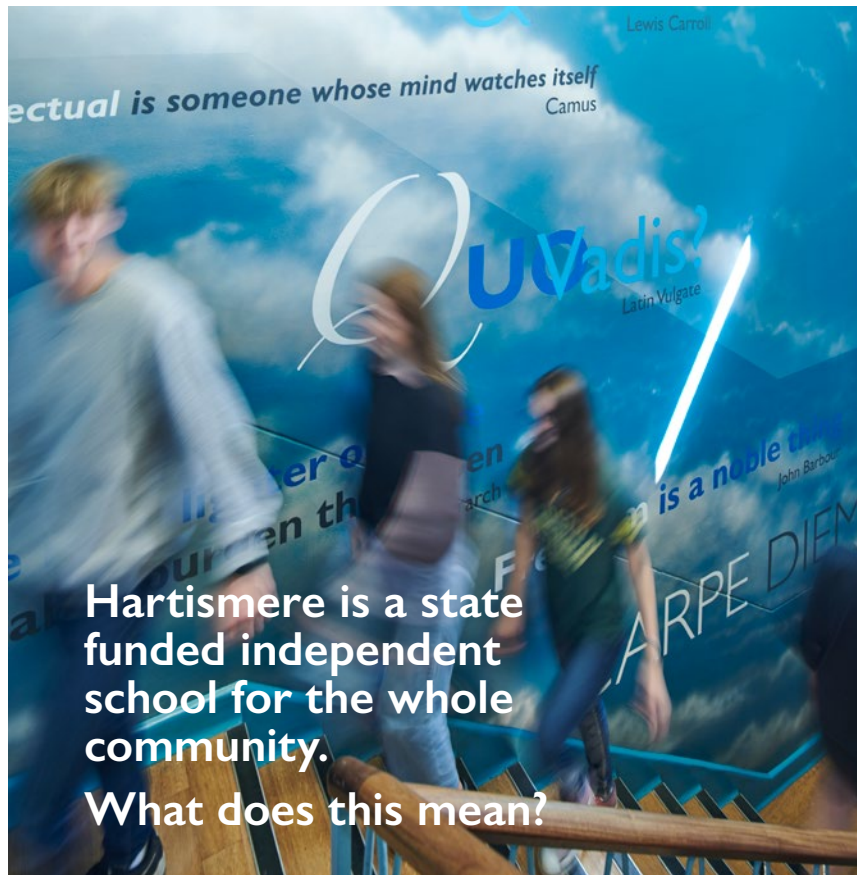
The rich academic and extra-curricular opportunities offered at Hartismere help to develop pupils who are bright, engaged and have a keen sense of responsibility for their community and wider world.

Their academic experiences, trips, clubs, societies, electives and sporting opportunities help to shape their decisions and ambitions for the future. All students receive guidance about their academic and career choices throughout their time at Hartismere. Most students continue into the sixth form college, where they achieve outstanding academic results and students progress to some of the country's most prestigious universities.

Ofsted say the sixth form...

“is outstanding and promotes a culture of high expectations and aspiration amongst teachers and students.”
Students receive...
“high quality advice and guidance about decisions regarding the next stages in their lives.”
and “a high proportion of the students go on to higher education, including the top universities.”

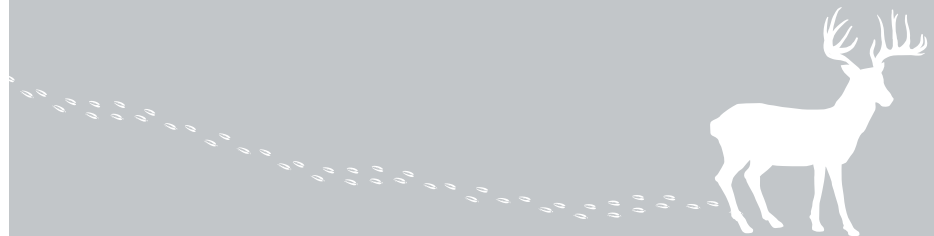
”



Hartismere was Suffolk's first Academy. This means that although the school continues to enjoy a good relationship with the local authority, it has independence from it. This independence is seen in the environment enjoyed by students at the school and in the curriculum our students follow. The school is able to respond to the needs of its own community. Hartismere charts its own course in the educational world, a course that reflects its independence and traditional academic and community values.

Images used by kind permission

Photos by Mike Harrington Photography® (Pages 2, 3, 6, 10, 14, 16, 19, 20, 22 and 23)
Designed and produced by Elsey Adcock Design.





Hartismere has an up-to-date safeguarding policy which is rigorously applied throughout the school.



Hartismere School

Castleton Way
Eye
Suffolk
IP23 7BL

01379 870315
office@hartismere.com

www.hartismere.com